



SOFT, LONG LASTING CURLS
CURL STYLER LUXE

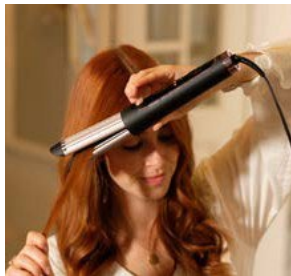


BaByliss®

CURL STYLER LUXE

STEP BY STEP

1. Ensure hair is dry and combed through to remove any tangles. Divide the hair into sections and select your preferred heat setting.
2. Separate a section of hair. A smaller hair section will give a tighter curl effect, whilst larger sections will create a looser curl effect.
3. Press and hold the button nearest the barrel to open the plates. Take a section of hair and place between the plates. Release the plates by letting go of the button so that the hair is held securely between the plates.
4. Holding the appliance handle in one hand and the cool tips in the other, turn the appliance 180° back on itself so that the hair is wrapped once around the outside of the appliance.
5. Slowly glide the appliance along the length of the hair from root to tip in a downward motion.
6. Release the appliance from the hair and repeat.



BaByliss®